

*'It's about our life, our health,
our care, our family and
our community'*



Better care together

Leicester, Leicestershire & Rutland health and social care

The 3 Hospitals in Leicester, Leicestershire and Rutland

www.bettercareleicester.nhs.uk

31st October 2018

The 3 hospitals for people who live in Leicester, Leicestershire and Rutland

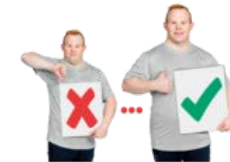
There are a few changes we would like to make
to the hospitals to make them better.



We think the changes will help patients.



The changes will improve the health services.



We want to change where we have some of the
services in the 3 hospitals.



We want to explain to you which services we would
like to move.



The 3 hospitals for people who live in Leicester, Leicestershire and Rutland

There are 3 main hospitals for people who live in Leicester, Leicestershire and Rutland.

These are for people who need treatment, operations or care to make them feel better.



The 3 main hospitals are called:

- The Leicester Royal Infirmary
- The Glenfield Hospital
- The General Hospital



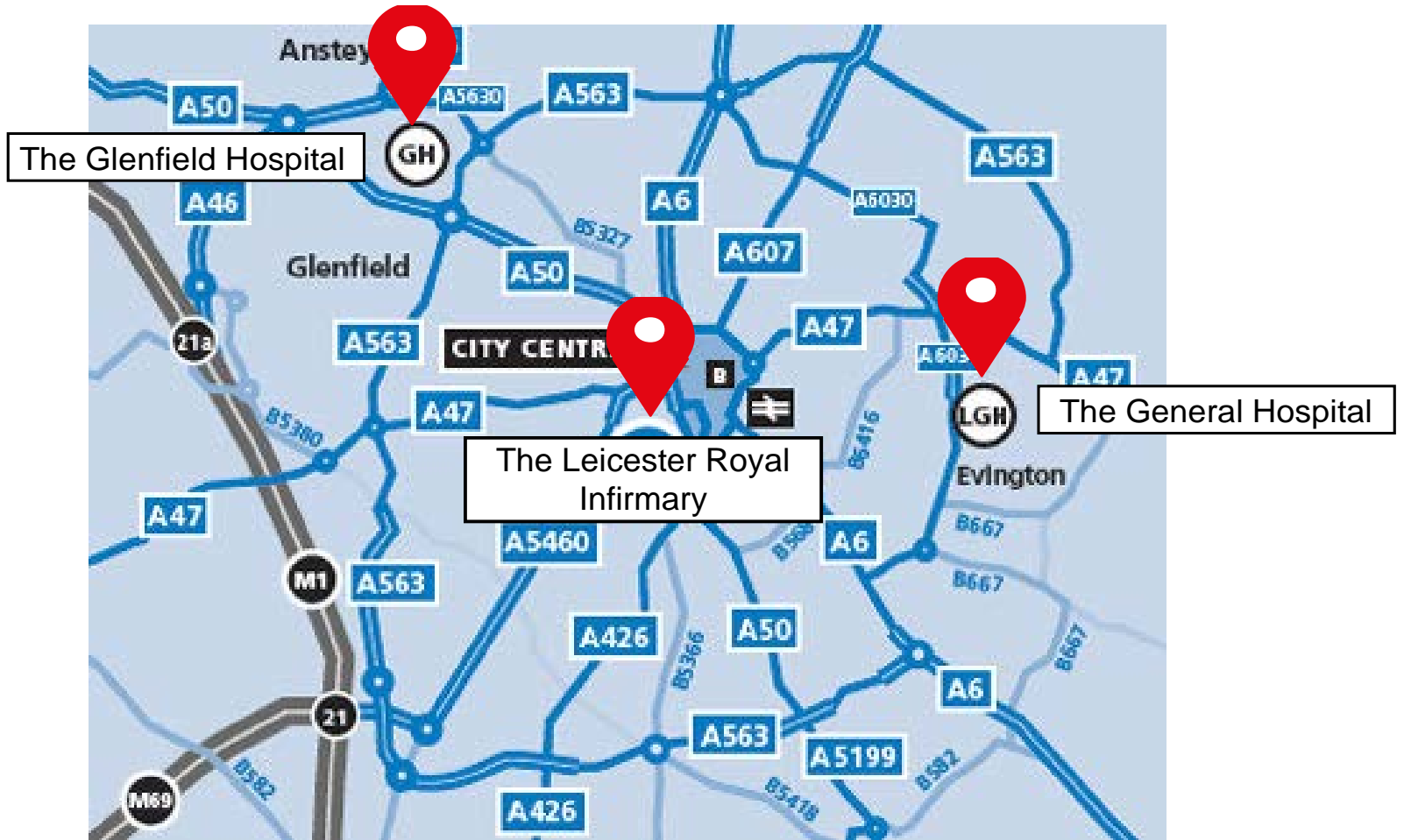
They are run by the organisation called the **University Hospitals of Leicester.**

Women can also give birth at 2 of the 3 hospitals.

- The Leicester Royal Infirmary
- The General Hospital



Map of the 3 hospitals in Leicester, Leicestershire and Rutland



The 3 main hospitals for people who live in Leicester, Leicestershire and Rutland

The 3 main hospitals in Leicester are very busy.

This means that the doctors and nurses are also very busy.

They have a lot to do to look after patients.

Patients who visit for treatment often have to wait a long time to be seen.



Sometimes appointments and operations are cancelled.

This can make patients feel more worried when they already feel unwell.

We want to make improvements so that patients get better quicker.



Urgent services at the hospitals

We sometimes call urgent services ‘**acute services**’.



Urgent services are for people who need:

- Treatment for an urgent medical condition
- Treatment for a severe injury or illness
- To recover from surgery



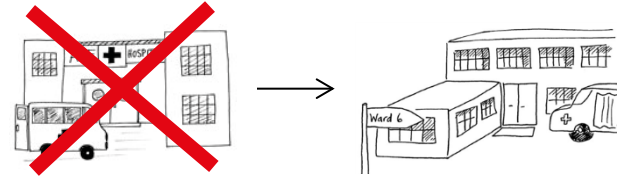
Urgent services at the 3 hospitals

We want to move all of the urgent services out of The General Hospital.

We want to move them to the Leicester Royal Infirmary and to The Glenfield Hospital.



We want to move some of the services that are not urgent to The General Hospital.



The services we want to move that are not urgent are:

Services for people who have diabetes.

Services for people to have x-rays and images taken of their body.

Services to help people who have had a stroke.



Maternity services

Maternity services is where women go to give birth.

Our maternity services are spread across 2 of the 3 hospitals. These are The Leicester Royal Infirmary and The General Hospital.

There is also a service called St Mary's Birthing Unit. This is in the Melton Mowbray area of Leicestershire.



Some women prefer to have their babies out of the hospital.

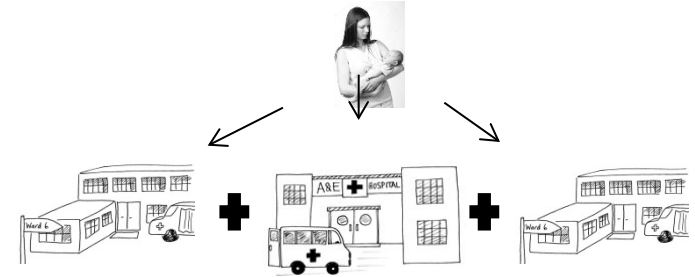
They prefer to give birth somewhere that feels more like a home.



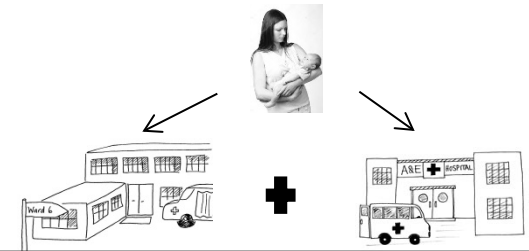
Maternity services

The maternity services are now at:

- 1. Leicester Royal Infirmary in Leicester**
- 2. The General Hospital in Leicester**
- 3. St Mary's Birthing Centre in Melton Mowbray**



We would like to move all of the maternity services into The Leicester Royal Infirmary.



This means that St Mary's Birthing Centre in Melton Mowbray would close down.



The new maternity service at The Leicester Royal Infirmary would be made bigger and better.



We may decide to put another smaller maternity service at The General Hospital. We will ask people for their views about this before we decide. This would be run by nurses instead of doctors.



Other changes to services

Services to treat diseases of women and girls are called **gynaecology services**.



We would like to move this service to The Leicester Royal Infirmary.



There would also be a new women's **Super Intensive Care Unit**. This would treat the women that are the most poorly.



There would be more parking for people at the hospital.

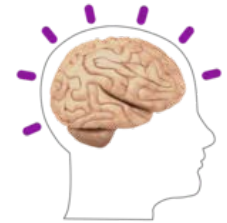


There would be a **Welcome Centre** to support and direct people to the right place.



Other changes to services

We would like to move the brain injury and other services that affect the head from **The Leicester Royal Infirmary** to **The General Hospital**.



We will be moving the Intensive Care Unit that is at **The General Hospital** to **The Leicester Royal Infirmary**.

This service will also become a Super Intensive Care Unit.



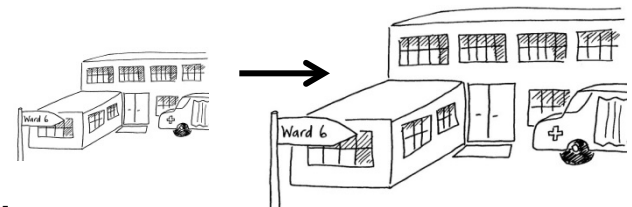
We want to make the Children's Hospital at The Leicester Royal Infirmary better.

There would be a new Children's Intensive Care Unit.



All of the changes together will make **The Glenfield Hospital** a much bigger hospital.

It will take a lot of services from the other 2 hospitals.



What this means for the hospitals

These changes would mean that:

Some new hospital buildings will be built.

Some hospital buildings will be refurbished.

Some hospital buildings will no longer be used.

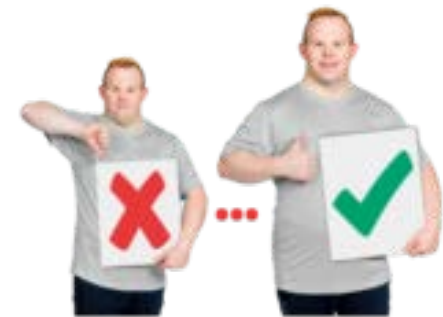


The services will be made more modern.

There will be some new services for patients.

Some services will be in a different hospital to where they were before.

The hospitals will run better.



What this means for the care in the community

We try to get patients home as soon as they no longer need help in a hospital.

Most people get better quicker at home.

Most people would prefer to stay at home to be looked after if they can.

Most people want to leave the hospital as soon as they are well enough to.



If people need to be cared for outside of a main hospital this is called '**community care**'.

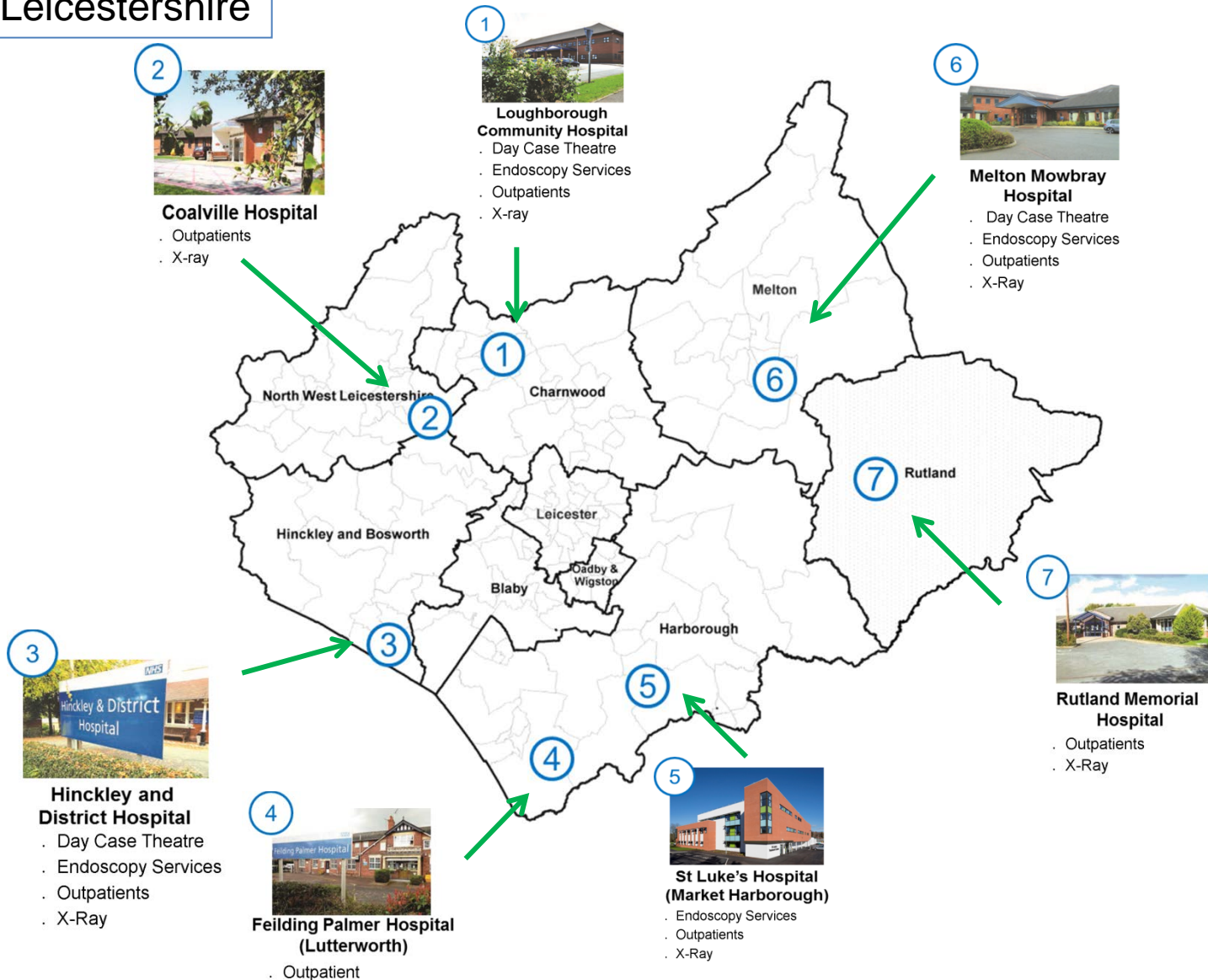
Nurses can visit people closer to where they live to look after them. Sometimes this can happen in their home.

Sometimes community care is in a community hospital.



Where are the community hospitals?

Map of Leicestershire



2

Coalville Hospital

- . Outpatients
- . X-ray



1

Loughborough Community Hospital

- . Day Case Theatre
- . Endoscopy Services
- . Outpatients
- . X-ray



6

Melton Mowbray Hospital

- . Day Case Theatre
- . Endoscopy Services
- . Outpatients
- . X-Ray



3

Hinckley and District Hospital

- . Day Case Theatre
- . Endoscopy Services
- . Outpatients
- . X-Ray



4

Feilding Palmer Hospital (Lutterworth)

- . Outpatient



5

St Luke's Hospital (Market Harborough)

- . Endoscopy Services
- . Outpatients
- . X-Ray



7

Rutland Memorial Hospital

- . Outpatients
- . X-Ray

What this means for the care in the community

There are lots of community services that people can use if they need to.

We want to make sure community services are the best that they can be.

We can do this by working together better.



We also need to make sure we have enough beds available for patients in the community.



We have been talking with patients about their care and what they want in future.

We will be asking people again for their views.

We are using these ideas to help us to shape our plans.



What will happen next

We want to know what you think about these changes before we go ahead.

We want to make sure you can have your say on the changes before they happen.



We want to know the best way to get your views.



We will update you in the new year with more details on the changes. You will then be able to tell us what you think.



We will be honest with you about any changes that will affect you.



*'It's about our life, our health,
our care, our family and
our community'*



Better care together

Leicester, Leicestershire & Rutland health and social care

**Thank you for
listening.**

